

KX-NSX1000/2000

Initial Setup

Rev1.2 17 Oct., 2016



Panasonic

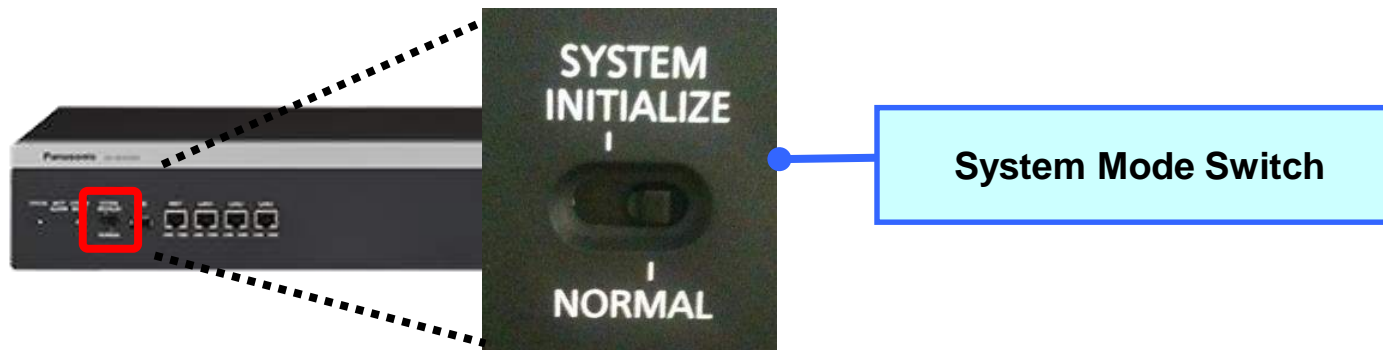
www.Aspanasonic.com

Chapter1 Initialization**1-1. System Initialization Procedure****Chapter2 Easy Setup****2-1. WebMC Startup****2-2. Launching the Easy Setup Wizard****Appendix****How to get the Key file**

Chapter 1

Initialization

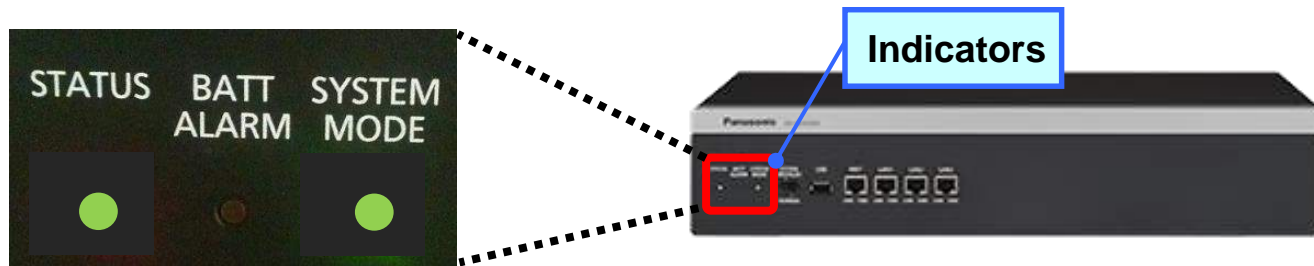
1. Ensure the power is "OFF".
2. Slide the System Mode Switch to the "SYSTEM INITIALIZE" position.



*Factory shipping condition of initialization SW : "SYSTEM INITIALIZE"


3. Turn the power "ON".
 - Turn on the power switch.
 - The "STATUS indicator" will flash green.

4. While the "STATUS Indicator" is flashing green, slide the System Mode Switch back to the "NORMAL" position.
- When successfully executed, the "STATUS" indicator will stop flashing and remain lit up. (It takes about 2.5 minutes.)



STATUS = Green ON
SYSTEM MODE = Green ON

LED transition while initial set up

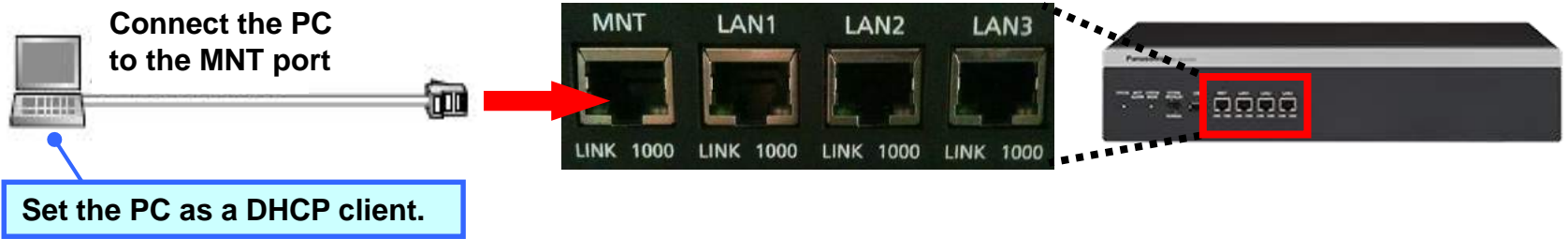
| Operation | STATUS indicator | BATT ALARM indicator | SYSTEM MODE indicator |
|--|------------------|----------------------|-----------------------|
| Power On | | | |
| | Amber lit | Red lit | Amber lit |
| | Green Fast Flash | Red lit | Off |
| | Green Fast Flash | Off | Off |
| Change Initialize SW to Normal It takes about 2.5 minutes until the STATUS indicator will lit green.  | | | |
| | Green Slow Flash | Off | Off |
| | Green Slow Flash | Off | Green lit |
| | Green lit | Off | Green lit |

Chapter 2

Easy Setup

Panasonic 2-1. WebMC Startup

1. Connect the PC to the MNT port of the NSX1000 with an ethernet cable.

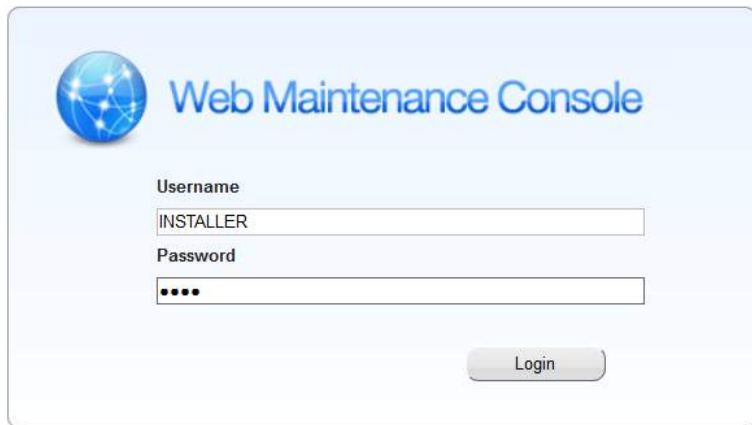


2. Launch your Web browser and enter the URL of WebMC.



- "223.0.0.1": the IP address of the MNT port = Fixed

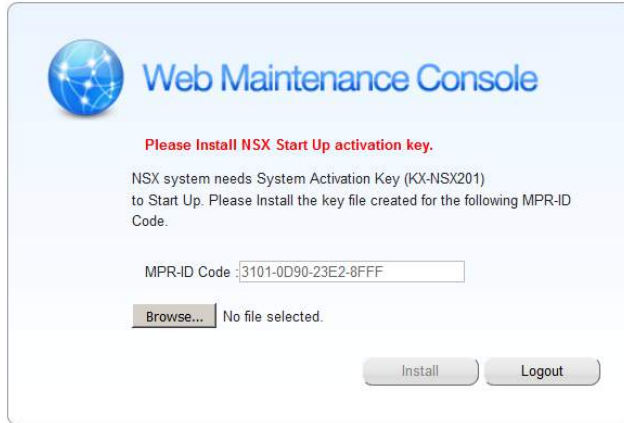
Login to the NSX



Default value,
Username : INSTALLER
Password : 1234



If the System Activation Key (KX-NSX201) has not been installed, this AK installation screen is displayed instead of the Easy Setup Wizard. Please see the Appendix for how to get the key file.



Important!

If 10 days temporary System Activation Key (KX-NSX201) is used to start system.

It has to be delete temporary AK and install permanent AK before temporary AK is expired.

If someone forget this process then the system go back default state.

How to delete TempAK,

1)WebMC "Maintenance" - "Utility" - "2.File" - "3.File View"

Select LICxxx and press "Detail" button.

2)You could see type and number of AK and validity date inside each file.

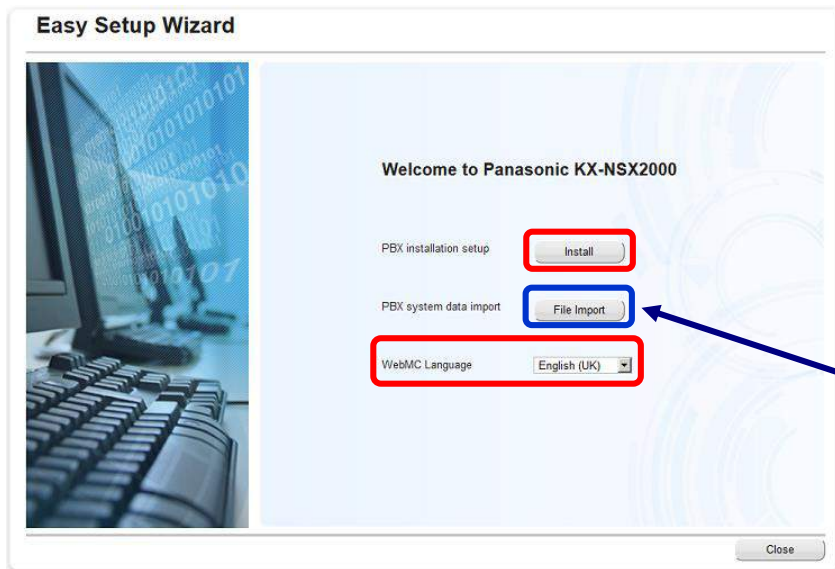
Keep note which file you need to delete.

3)Then go to "Maintenance" - "Utility" - "2.File" - "4.File Delete"

And delete file that you need to delete.

4)Install proper AK(it is OK with one you installed before) file to reflect this delete to the system.

Easy Setup Wizard



**Select WebMC Language,
then click “Install”.**

**It is also possible to import the system file
created by “Bulk Administration Tool”.**

Easy Setup Wizard

Easy Setup Wizard

Welcome to Panasonic KX-NSX2000

Location Setting

Area: BX

Password Setting

Installer password (4-16 characters):

Re-enter (4-16 characters):

CAUTION: It is strongly recommended that a password should be complex for maximum protection. Change the password periodically.

System Multi-Connection (Trial Activation Key)

Available for 60 days from current local time.

Active

Non Active

Start Setup Wizard.

Close

Select “Area” and set “Password”, then click “Start Setup Wizard”.
(If change the Area, NSX will restart.)

If create the System Multi-Connection, Select “Active” to enable the trial AK.

“1234” can’t be assigned as password.

Easy Setup Wizard

Easy Setup Wizard

1 Date & Time

2 Numbering Plan

3 Trunk

4 User/Extension

5 LAN

6 Maintenance Setting

Date & Time

System Time

Time Zone: +9 :00

Local Time: 2015/11/20 14:55:42

SNTP Setting

SNTP Server IP Address: Port: 123

Daylight Saving

Enable Disable

Previous Next Close

System Time (time zone and local time of PC will set automatically).

Set SNTP server IP address for automatic time adjustment, if there is SNTP server.

Select “Enable” or “Disable” for Daylight Saving.

- This setting is for countries using “Daylight Saving”.

Click “Next”.

Easy Setup Wizard

Easy Setup Wizard

- 1 Date & Time
- 2 **Numbering Plan**
- 3 Trunk
- 4 User/Extension
- 5 LAN
- 6 Maintenance Setting

Numbering Plan

Feature No
 Type1 (with "") Type2 (without "")

CO Access / Operator No
CO Access No Dial "0" Dial "1" Dial "9"
Operator No Dial "0" Dial "9"

Select default value of Numbering Plan
 3 digits Extension Number
 From "101" From "201"
 4 digits Extension Number
 From "1001" From "2001"

Previous **Next** Close

Set Numbering Plan such as CO Access Number etc.,

Click "Next".

Easy Setup Wizard

Easy Setup Wizard

- 1 Date & Time
- 2 Numbering Plan
- 3 Trunk
- 4 User/Extension
- 5 LAN
- 6 Maintenance Setting

Trunk

SIP Trunk
SIP Trunk Setting

Incoming Call Distribution Group

Do you wish to set separate ICD Groups automatically as DIL destinations for all installed SIP Trunk ports?
If you select "Yes", incoming calls can appear on different PT S-CO buttons when multiple incoming DIL calls arrive simultaneously at the SIP Trunk ports, and so on.
Please select "No" if the ICD Group Queuing feature is to be used (in Contact Center for example).

If you select "Yes", the following items are set automatically. 1. [10.2 DIL Table & Port Settings](Max:64 trunks)
No.1 [DIL Destination]Day/Lunch/Break/Night:601
No.2 [DIL Destination]Day/Lunch/Break/Night:602
.....
2 [3.5.1 Group Settings]
32 extensions are assigned to ICD Groups(No.1-No.64) as members
3 [3.5.1 Group Settings]
"Enable" is set for [Call Waiting Distribution] of ICD Groups(No.1-No.64) in [Main]

Yes No

Previous **Next** Close

SIP Trunk Setting

Set SIP Account for Trunk: (Max: 256 ports, and need IP Trunk AK for Activate.)
You can set the preference Accounts, 1st and 2nd.

1st Account Setting

Number of SIP Trunk : 0 port(s)

Account Setting

User Name (64 characters)

Authentication ID (64 characters)

Authentication Password (32 characters)

SIP Server Name / Outbound Proxy Name (Max:100 characters)

SIP Server IP Address

SIP Server Domain / Proxy Domain (Max:100 characters)

2nd Account Setting

Number of SIP Trunk : 0 port(s)

Account Setting

User Name (64 characters)

Authentication ID (64 characters)

Authentication Password (32 characters)

SIP Server Name / Outbound Proxy Name

OK Cancel

Set SIP Trunk Account, if use SIP Trunk.
Click "Next".

Easy Setup Wizard

Easy Setup Wizard

1 Date & Time
2 Numbering Plan
3 Trunk
4 User/Extension
5 LAN
6 Maintenance Setting

User/Extension

Number of Users:

| | |
|---------------|---|
| Normal User | 0 |
| Mobile User | 0 |
| Advanced User | 0 |
| Total | 0 |

Note: The system will create User Container data, according to the number specified here. You need to activate the user AK later.

Users Information Settings:

| | |
|--------------------------------|--------------------|
| WebMC Language: | English (UK) |
| PT Display Language Selection: | Language1[English] |
| Main Device Type: | None |

IP Terminal Registration Mode:

Manual
 Full Automatic

Previous Next Close

Set “Users information settings”.

- WebMC Language for User portal
- PT Display Language
- Main Device Type

Set “IP Terminal Registration Mode”.

Click “Next”.

Easy Setup Wizard

Easy Setup Wizard

- 1 Date & Time
- 2 Numbering Plan
- 3 Trunk
- 4 User/Extension
- 5 LAN
- 6 Maintenance Setting

LAN

IP Address for main unit

Obtain an IP address automatically

Use the following IP address

| | |
|------------------|---------------|
| IP Address: | 192.168.0.101 |
| Subnet Mask: | 255.255.255.0 |
| Default Gateway: | 0.0.0.0 |

IP Address for DNS server

Obtain DNS server address automatically

Use the following DNS server address

| | |
|-----------------------------|---------|
| Preferred DNS IP Address: | 0.0.0.0 |
| Alternative DNS IP Address: | 0.0.0.0 |

IP Address for DSP

Obtain DSP IP address automatically

Use the following DSP IP address

| | |
|---------------|---------------|
| DSP Card #1 | |
| IP Address 1: | 192.168.0.102 |
| IP Address 2: | 192.168.0.103 |
| DSP Card #2 | |
| IP Address 1: | 192.168.0.104 |
| IP Address 2: | 192.168.0.105 |
| DSP Card #3 | |
| IP Address 1: | 192.168.0.106 |
| IP Address 2: | 192.168.0.107 |

Previous **Next** Close

Assign “IP address for main unit”,
“IP address for DNS server” and
“IP address for DSP”.

Click “Next”.

Easy Setup Wizard

Easy Setup Wizard

1 Date & Time
2 Numbering Plan
3 Trunk
4 User/Extension
5 LAN
6 Maintenance Setting

Maintenance Setting

Remote Access Acceptance

INSTALLER
 Panasonic Support

NOTE: Check the box to allow remote access from the specified maintenance technician. If you do not wish to allow remote access, leave the box unchecked.

SNMP Setting

SNMP Agent Function:
 Disable SNMPv3 SNMPv2c SNMPv1

Port Number (receive): 161
MIB - SysContact:
MIB - SysName: ROK-NSX2000
MIB - SysLocation:

SNMP Manager

Manager IP Address:
 Manager Host Name:
TRAP port number (send): 162
Community Name: public

Previous **Finish** Close

Set “Remote access acceptance”.

Set SNMP.

Click “Finish”.

If change the LAN settings, NSX will be re-start.

Easy Setup Wizard

The screenshot shows the 'Web Maintenance Console' for an NSX2000 system. The user is logged in as 'INSTALLER'. The console displays a table of site information and a legend for status indicators.

Legend:

- INS (Green circle)
- OUS (Yellow circle)
- Pre-INS (Blue circle)
- Idle (Purple circle)
- Fault (Red circle)
- INS (Congested) (Green circle with slash)
- Suspended (Yellow circle with slash)

Navigation Buttons: Registration, De-registration, Forced De-registration, SYSTEM ALARM

| Site ID | Site Name | Location(MIB) | Status | PBX Mode | Direct Login | Operation Mode | PBX Model | IP Address | MAC Address | PBX Version | Re |
|---------|-----------|---------------|--------|----------|--------------|----------------|------------|---------------|-------------------|-------------|----|
| 1 | NSX2000 | | INS | master | - | Change | KX-NSX2000 | 192.168.0.101 | 08:00:23:E2:90:11 | 001.00063 | |

Finish "Easy Setup"

Thank you ! The END

Appendix

How to get the Key file.



Access KMS (Key Management System)
<https://kms.business.panasonic.net/kms/>

Click “Key Management System (KMS)”

Enter “User ID” and “Password”, then click “Login”

How to get the Key file.

For Dealers - Menu -

Download PBX Products Demo

Download Activation Key Files Download Demo

Special Temporary Activation Key Service and Maintenance Activation Key

Click "Download Activation Key Files"

Download History

Make Report Search MPR/ SYSTEM ID

Support Management

Installation destination list Access history list



For Dealers - Select PBX Models -

STEP 1 Select PBX Models STEP 2 Select Activation Key Type STEP 3 Enter MPR/ SYSTEM ID STEP 4 Enter Activation Key No. STEP 5 Confirm and Download STEP 6 Install Activation Key

Each MPR ID can download the same Activation Key File again that has been downloaded before.

PBX Models: All Models

Please select the model to download

- KX-NC1000
- KX-NC1030
- KX-NS1000AE
- KX-NS1000BJ
- KX-NS1000C
- KX-NSX0900
- KX-TDE200
- KX-TDE600

Previous **Next Step**

For Dealers - Select Activation Key type -

STEP 1 Select PBX Models STEP 2 **Select Activation Key Type** STEP 3 Enter MPR/ SYSTEM ID STEP 4 Enter Activation Key No. STEP 5 Confirm and Download STEP 6 Install Activation Key

Selected PBX Models: KX-NSX0900

Please select the Activation Key File type

- Activation Key File
- Temporary Activation Key File
- System/Maintenance/Remote Activation Key File

Previous **Next Step**

Select "NSXxxxx", then click "Next Step"

Select "System/Maintenance/Remote Activation Key Files", then click "Next Step"

How to get the Key file.

For Dealers - System/Maintenance/Remote Activation Key Files download - Enter MPR/SYSTEM ID



Please enter the MPR/SYSTEM ID.

Please confirm the MPR ID is correct before click [Next step] button.
If you want to re-download the file, set to ON check.

MPR/SYSTEM ID

Manual Enter

Paste Enter B601-0D00-2707-7010

You want to re-download the Activation Key file

Previous **Next step**

Enter "MPR ID", then click "Next Step"



System Maintenance Remote

Please enter all of the following contents.

MPR/SYSTEM ID AA00-3070-1000-0000-0000

Activation Key No.

Manual Enter

Paste Enter AA00-3070-1000-0000-0000

Registration ID Z Note: The Registration ID is case-sensitive.

Company Name Panasonic OPBD

Installation Location Fukuoka Japan

Serial No. 5A000000

Previous **End of enter (Go to next step)**

Select "System" and enter all contents, then click "End of enter (Go to next step)"

How to get the Key file.

For Dealers - Remote Maintenance Activation Key File download - Confirm and download -



The following Activation Key Files will be downloaded.

Besides download, you can also receive the Activation Key Files by e-mail. Please mark in the check box below, if you want.

- *1. We will send the files to the e-mail address shown below.
- *2. Please overwrite the existing address on the situation as follows.
 - The e-mail address is not correct: it reflects your registered information.
 - If you want to change the receiving e-mail address.

You can change the subject of the Activation Key Files whatever you want before download. We recommend you to change the subject manageably. Ex) add reference No.

After confirmation, please click the button of [Download].

E-mail Address:

Subject:

Company Name:

Installation Location:

Serial No.:

NOTE in the download dialog. Please make sure to select [SAVE] button.



Please install the downloaded Activation Key File in the PBX System without change.

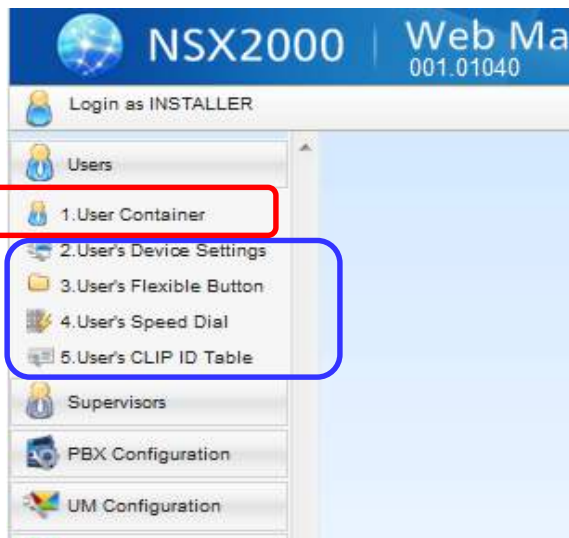
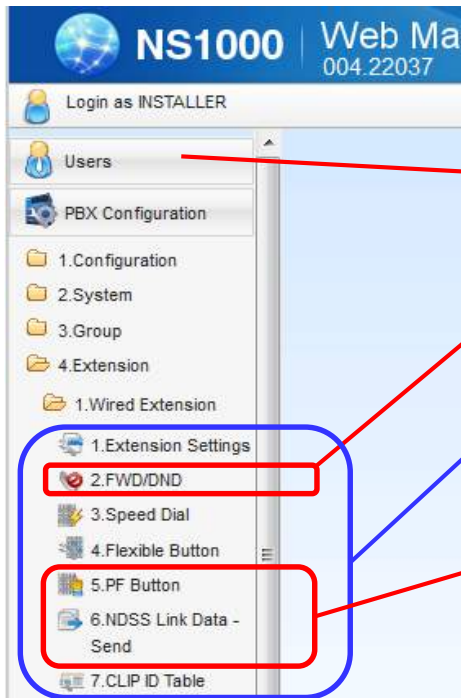
MPR/SYSTEM ID B601-0D00-2707-700A

| Item No. | Activation Key No. | Model No. | Activation Key Type | Expiration Date |
|----------|--------------------------|--------------------|-----------------------|-----------------|
| 1 | AA00-2070-1000-0000-0013 | KX-NSX201X/NSX2000 | System Activation Key | 10/04/2016 |

If you want to receive the Activation Key Files by e-mail, enter “E-mail Address.”

Click “DOWNLOAD”.

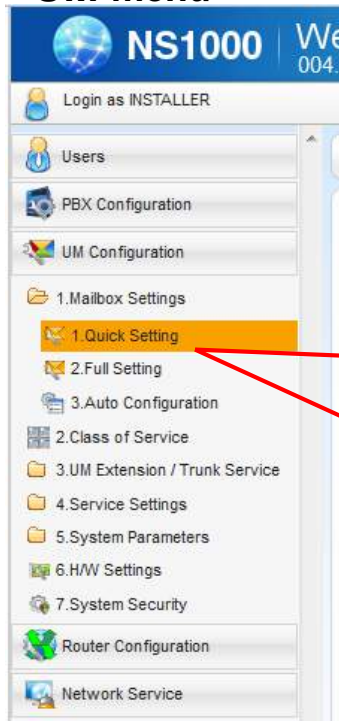
PBX menu



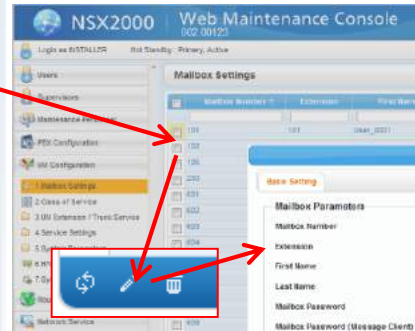
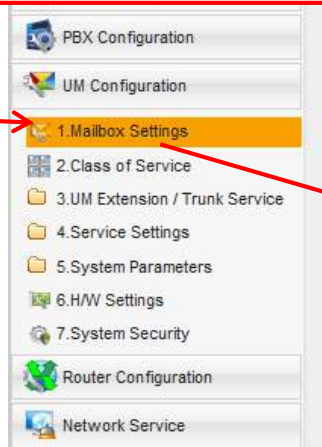
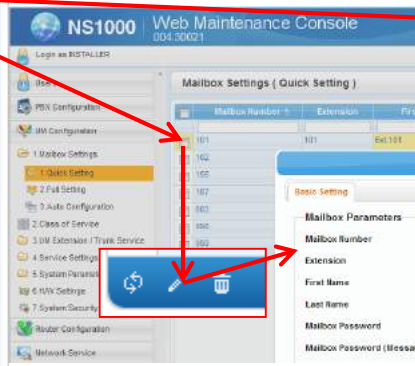
**KX-NSX does not support network DSS and centralized VM.
KX-NSX does not support PF key of very old Analog PT.**

Generally Extension setting move under “Users”

UM menu



Mailbox Setting squeezed to 1 selection which is “1.Mailbox Setting”. It is equivalent as “Quick Setting” at NS. “2.Full Setting” and “3.Auto Configuration” is deleted from NSX.



IPGW menu

Gatekeeper Property

- Call Signaling Model
- Gatekeeper Connection Checking Interval (*60s)
- Terminal type to Gatekeeper
- Gatekeeper ID to Gatekeeper
- Bandwidth to Gatekeeper
- Primary Gatekeeper IP Address
- Primary Gatekeeper Port Number
- Secondary Gatekeeper IP Address
- Secondary Gatekeeper Port Number

*) Perform System Reset for changes to take effect

Card Property - Virtual IP Gateway

Main | Outgoing Call | Incoming Call | Timer

- Gatekeeper Available
- RTCP Packet Sending Ability
- RTCP Packet Interval

Port Property - Virtual IP Gateway

Incoming Settings | Outgoing Settings | Trunk Adaptor

| No. | Site | Shelf | Slot | Port | Connection | Connection Attribute | Call Distribution Port Group |
|-----|------|---------|------|------|------------|----------------------|------------------------------|
| 1 | 1 | Virtual | 2 | 1 | INS | Gateway | 1 |
| 2 | 1 | Virtual | 2 | 2 | INS | Gateway | 1 |
| 3 | 1 | Virtual | 2 | 3 | ONS | Gateway | 1 |

IPGW menu

The screenshot displays the IPGW configuration interface with several key sections:

- Port Property - Virtual IP Gateway:** Contains sub-tabs for Incoming Settings, Outgoing Settings, and Trunk Adaptor. A table lists port configurations:

| No. | Site | Shelf | Slot | Port | Connection |
|-----|------|---------|------|------|------------|
| 1 | 1 | Virtual | 2 | 1 | INS |
| 2 | 1 | Virtual | 2 | 2 | INS |
| 3 | 1 | Virtual | 2 | 3 | OIS |
- DN to Gateway:** Gateway Setting section with a table:

| No. | Leading Number (30 digits) | Remaining Number of Digits | GW No./GW Group Selection | GW Group | GW No. |
|-----|----------------------------|----------------------------|---------------------------|----------|--------|
| 1 | 2240 | 29 | GW No. | 1 | 1 |
| 2 | 2 | 29 | GW No. | 1 | 1 |
| 3 | 3 | 29 | GW No. | 1 | 1 |
- DN to Call Distribution Port Group:** Hunt Pattern 1 - 8 section with a table:

| No. | Leading Number (30 digits) | Call Distribution Port 1st Group | Call Distribution Port 2nd Group |
|-----|----------------------------|----------------------------------|----------------------------------|
| 1 | 1 | CDPG 1 | None |
- GW Setting:** Main tab with a table:

| GW No. | GW Name (20 characters) | GW IP Address | GW Group | Connection for IP.GW | Protocol | Progress Tone Send Mode |
|--------|-------------------------|---------------|----------|----------------------|----------|-------------------------|
| 1 | | 192.168.0.101 | None | Enable(TDA) | TCP | Internal |
| 2 | | | None | Enable(TDA) | TCP | Internal |
- Port Property - Virtual IP Gateway (Bottom):** Includes a Trunk Adaptor List table:

| No. | Trunk Adaptor Name | Trunk Adaptor IP Address |
|-----|--------------------|--------------------------|
| 1 | | |
| 2 | | |

Red arrows indicate the following relationships:

- From the **Trunk Adaptor** tab in the top-left menu to the **Trunk Adaptor List** table in the bottom-right menu.
- From the **Trunk Adaptor** tab in the top-left menu to the **DN to Call Distribution Port Group** section.
- From the **Trunk Adaptor** tab in the top-left menu to the **DN to Gateway** section.
- From the **Trunk Adaptor** tab in the top-left menu to the **GW Setting** section.

IPGW menu



| | | |
|--|---|------------------------------------|
| H.225 Port Number | : | <input type="text" value="1720"/> |
| RAS Port Number | : | <input type="text" value="1719"/> |
| QSIG Connectionless Tunnelling TCP Port Number | : | <input type="text" value="1718"/> |
| QSIG Connectionless Tunnelling UDP Port Number | : | <input type="text" value="1717"/> |
| H.323 Dynamic Port Number | : | <input type="text" value="10000"/> |

1.1_NSX1000_2000_Initial Setup_Rev1.0_17Mar2016.pptx

- 1st release

1.1_NSX1000_2000_Initial Setup_Rev1.1_17Mar2016.pptx

- Correction at Slide 8 and Add description for Slide 11

1.1_NSX1000_2000_Initial Setup_Rev1.2_17Oct2016.pptx

- Add Slide 10, 11 to describe notice for using System temp AK